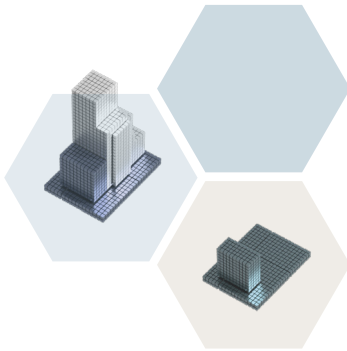


ARCHIDATA BIM TOOLS

For standardization and management of project 3D model data | Revit



DICTIONARY

- Establishes expected equipment typology and properties
- Determines the link between 3D model properties and building software properties



CHECKER

- Verifies models at each project phase
- Validates compliance of expected typology and properties
- Checks model compliance with technical specifications
- Generates Excel and PDF error reporting



TRANSFORMATION

- Extracts and converts data for operations
- Identifies the equipment room number (GIS)

DICTIONARY

Family Code	Family Name	Equipment Types	Type Name	Qty	Link	Disciplines	Uniformed Lev.2	Uniformed Lev.3	Uniformed Lev.4	IFC Entity	REVIT Category	Min Size	External Softwares	Qty	Link
AIRCON	Air conditioning cabinet	AIRCON-DEPX	Air conditioning cabinet - direct expansion	57	PROF	HVC	(D30) HVAC	(D300) Cooling Generating Systems	(D300999) Other cooling generating systems	MEEnergyConversionDevice	Mechanical Equipment	Yes	Maximo	12	Edimatis
AIRCON	Air conditioning cabinet	AIRCON-CWC	Air conditioning cabinet - chilled water circuit	45	PROF	HVC	(D30) HVAC	(D3000) Cooling Generating Systems	(D300999) Other cooling generating systems	MEEnergyConversionDevice	Mechanical Equipment	Yes	Maximo	4	Edimatis
AIRCON	Air conditioning cabinet	AIRCON-BOX	Air conditioning cabinet	31	PROF	HVC	(D30) HVAC	(D3030) Cooling Generating Systems	(D300999) Other cooling generating systems	MEEnergyConversionDevice	Mechanical Equipment	Yes	Maximo	7	Edimatis
AROTH	Aerotherm	AROTH-GAS	Gas air heater	47	PROF	HVC	(D30) HVAC	(D3020) Heat Generating Systems	(D300999) Other heat generating systems	MEEnergyConversionDevice	Mechanical Equipment	Yes	Maximo	10	Edimatis
BLVR	Blower	BLVR-V	Blower vent	19	PROF	HVC	(D30) HVAC	(D3040) Distribution Systems	(D30401) Air distribution heating & cooling	MEFlowTerminal	Air Terminals	Yes		0	Edimatis
PIPES	Pipelines and pipe fittings	PIPES-ACS	Pipeline accessories	12	PROF	PLB	(S20) Site Mechanical Utilities	(S2000) Sanitary Sewer	(S20001) Sanitary Sewer	MEFlowController	Pipe Accessories	Yes		0	Edimatis
PIPES	Pipelines and pipe fittings	PIPES-INS	Pipe insulation	12	PROF	PLB	(D30) HVAC	(D3020) Systeme de production de chaleur	(D30206) Equipment thermal insulation	MECovering	Pipe Insulators	Yes		0	Edimatis
PIPES	Pipelines and pipe fittings	PIPES-P	Pipeline	26	PROF	PLB	(S20) Site Mechanical Utilities	(S2000) Sanitary Sewer	(S20001) Sanitary Sewer	MEFlowSegment	Pipes	Yes		0	Edimatis
PIPES	Pipelines and pipe fittings	PIPES-CON	Pipe connection	12	PROF	PLB	(D20) Plumbing	(D2020) Domestic Water Distribution	(D20201) Pipes & fittings	MEFlowFitting	Pipes	Yes		0	Edimatis
COLD	Cold room	COLD-REV	Evaporators and evaporation groups	39	PROF	HVC	(D30) HVAC	(D3090) Other HVAC Systems & Equipment	(D30902) Refrigeration systems	MEEnergyConversionDevice	Mechanical Equipment	Yes	Maximo	6	Edimatis
BOIL	Boiler	BOIL-1MV	Boiler rated power low	65	PROF	HVC	(D30) HVAC	(D3020) Heat Generating Systems	(D30202) Hot water heating	MEEnergyConversionDevice	Mechanical Equipment	Yes	Maximo	18	Edimatis
BOIL	Boiler	BOIL-400MV	Boiler rated power 400 kW	64	PROF	HVC	(D30) CVCA	(D3020) Heat Generating Systems	(D30202) Hot water heating	MEEnergyConversionDevice	Mechanical Equipment	Yes	Maximo	18	Edimatis
BLVR	Blower	BLVR-V	Blower vent	19	PROF	HVC	(D30) HVAC	(D3040) Distribution Systems	(D30401) Air distribution heating & cooling	MEFlowTerminal	Air Terminals	Yes		0	Edimatis
PIPES	Pipelines and pipe fittings	PIPES-ACS	Pipeline accessories	12	PROF	PLB	(S20) Site Mechanical Utilities	(S2000) Sanitary Sewer	(S20001) Sanitary Sewer	MEFlowController	Pipe Accessories	Yes		0	Edimatis
PIPES	Pipelines and pipe fittings	PIPES-INS	Pipe insulation	12	PROF	PLB	(D30) HVAC	(D3020) Systeme de production de chaleur	(D30206) Equipment thermal insulation	MECovering	Pipe Insulators	Yes		0	Edimatis
PIPES	Pipelines and pipe fittings	PIPES-P	Pipeline	26	PROF	PLB	(S20) Site Mechanical Utilities	(S2000) Sanitary Sewer	(S20001) Sanitary Sewer	MEFlowSegment	Pipes	Yes		0	Edimatis
PIPES	Pipelines and pipe fittings	PIPES-CON	Pipe connection	12	PROF	PLB	(D20) Plumbing	(D2020) Sanitary Sewer piping	(D20201) Sanitary sewer piping	MEFlowSegment	Pipes	Yes		0	Edimatis

1. File compliance



1-2_FIKHER_IFC_TAILLE_25000

IFC model below 250 MB

100.0%

1-3_IFC_FILE_FORMAT_NAME

Respect naming convention for models

0.0%

1-4_IFC_FILE_EXTENSION_X3D

Maquette au format IFC X3D

100.0%

2/24/2024 11:35:58 PM

Project: [BRT010] RNR_BRT_EB_25 Phase: [A] Phase 1
 Discipline: [A] Architecture Step: [F] [AB] As Built BIM Sector: [1] B.V. (BRT-B019)
 Version: [0] Current Version

Not Trained: 33 Accepted: 65 Accepted with warnings: 21 Refused: 4 Rejected: 0 Total: 123

Validation done by Louise Morgan on 2024-02-05 at 22:38 on model: BRT010-030MFA1a

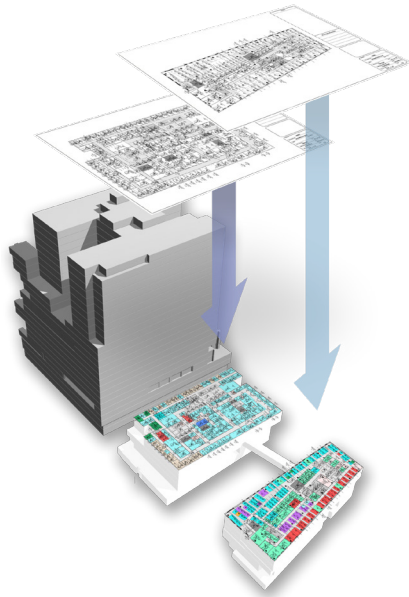
- ◆ [Stage 5] IDENTIFICATION OF OBJECTS
 - [Rule 05-01] Type Validation per IFC: 77/123] OBJECT_ID_TYPE_ENTITY -> Status: rejected
 - [Rule 05-02] Type Validation per Discipline: 76/123] OBJECT_DISCIPLINE_ENTITY -> Status: rejected
- ◆ [Stage 6] PRESENCE PSET AND DATA
 - [Rule 06-01] PSET List Validation per Type: 114/123] OBJECT_PSET_TYPE -> Status: rejected
 - [Rule 06-02] PROP List Validation per Type: 125/123] OBJECT_PROP_PSET_Identification -> Status: accepted
 - [Rule 06-03] PROP List Validation per Type: 125/123] OBJECT_PROP_PSET_Bases Quantities -> Status: accepted
 - [Rule 06-04] PROP List Validation per Type: 120/123] OBJECT_PROP_PSET_CHMS -> Status: warning
 - [Rule 06-05] PROP List Validation per Type: 125/123] OBJECT_PROP_PSET_Space Management -> Status: accepted
 - [Rule 06-07] PROP List Validation per Type: 125/123] OBJECT_PROP_PSET_Asset Management -> Status: accepted
 - [Rule 06-08] PROP List Validation per Type: 102/123] OBJECT_PROP_PSET_Architecture -> Status: warning
 - [Rule 06-09] PROP List Validation per Type: 125/123] OBJECT_PROP_PSET_Dimensions -> Status: accepted
 - [Rule 06-10] PROP List Validation per Type: 125/123] OBJECT_PROP_PSET_CAD -> Status: accepted
 - [Rule 06-11] PROP List Validation per Type: 125/123] OBJECT_PROP_BGC_Technical Specifications -> Status: accepted
 - [Rule 06-12] PROP List Validation per Type: 125/123] OBJECT_PROP_PSET_Localization -> Status: accepted
 - [Rule 06-13] PROP List Validation per Type: 125/123] OBJECT_PROP_PSET_Rehabilitation -> Status: accepted
 - [Rule 06-14] PROP List Validation per Type: 94/123] OBJECT_PROP_PSET_Fire Protection -> Status: warning
 - [Rule 06-18] PROP List Validation per Type: 125/123] OBJECT_PROP_PSET_SpaceCommon -> Status: accepted
 - [Rule 06-19] PSET/PROP Unicity Validation: 57/188] OBJECT_PROP_PSET_UNIQUE -> Status: warning
- ◆ [Stage 7] MODEL AND ROOMS
 - [Rule 07-01] Attribute Validation: 22/22] ROOMS__PROP_SITE -> Status: accepted
 - [Rule 07-02] Attribute Validation: 22/22] ROOMS__PROP_BUILDING -> Status: accepted
 - [Rule 07-03] Space Unicity Validation: 22/22] ROOMS__PROP_ROOM -> Status: accepted
 - [Rule 07-04] Attribute Validation: 22/22] ROOMS__PROP_ROOMNUMBER_FORMAT -> Status: accepted

CHECKER

ARCHIDATA BIM TOOLS

Retro-BIM: from 2D to 3D

Archidata developed a 2D (DWG) to 3D (IFC) converter to facilitate digital transformation of existing buildings.



BENEFITS

- Data governance using certified AutoCAD drawings and Revit files as single-source for financial statements, leases and operations
- Digital transformation by converting AutoCAD drawings of existing buildings into 3D models (Space Digital Twin) and keeping them up to date
- Better measurement of ESG initiatives by providing digital twins
- Increase in the value of the real estate portfolio with more connected and intelligent buildings
- Faster due diligence when selling a building
- Reduction of operating costs thanks to an interface with legacy business systems (ERP, EDM and IWMS)
- Management and use of Revit files for new constructions for property management

